

312. Schneidstempel DIN 9861, Form D

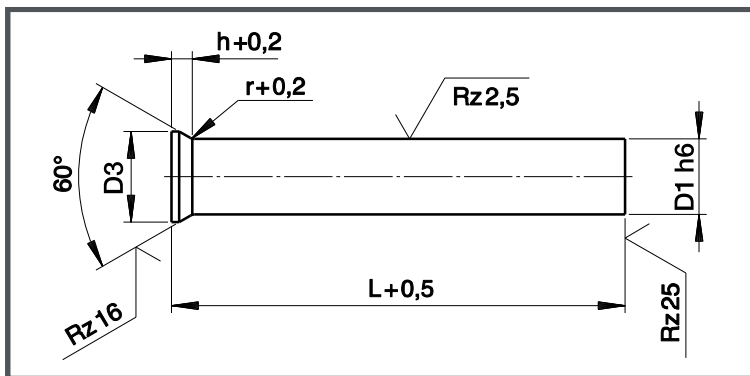
i Produkteigenschaften

Material: HSS (1.3343)

Härte: Schaft: 64 ± 2 HRC
Kopf: 50 ± 5 HRC

Andere Materialien und Abmessungen auf Anfrage.

Zeichnung zu 312.



Bestellbeispiel:

312.1000.080
Schneidstempel DIN 9861
Form D, HSS
 $D1 = 10,0$ mm
 $L = 80,0$ mm



Tabelle zu 312.

D1 h6	D3 ±0,05	r +0,2	L +0,5			
			71	80	100	130
Standardlängen						

0,50			0,9	●			
0,55			1,0	●			
0,60			1,1	●			
0,65			1,2	●			
0,70	+	0,75	1,3	●			
0,80	+	0,85	1,4	●			
0,90	+	0,95	1,6	●			
1,00	+	1,10	1,8	●	●	●	
1,20	+	1,30	2,0	●	●	●	
1,40	+	1,50	2,2	●	●	●	
1,60	+	1,70	2,5	●	●	●	
1,80	+	1,90	2,8	●	●	●	
2,00			3,0	●	●	●	
2,10	+	2,20	3,2	●	●	●	
2,30	-	2,50	3,5	●	●	●	
2,60	-	2,90	4,0	●	●	●	
3,00	-	3,40	4,5	●	●	●	●
3,50	-	3,90	5,0	●	●	●	●
4,00	-	4,40	5,5	●	●	●	●

D1 h6	D3 ±0,05	r +0,2	L +0,5			
			71	80	100	130
Standardlängen						

4,50	-	4,90	6,0	0,6	●	●	●	●
5,00	-	5,40	6,5		●	●	●	●
5,50	-	5,90	7,0		●	●	●	●
6,00	-	6,40	8,0		●	●	●	●
6,50	-	7,40	9,0	1,0	●	●	●	●
7,50	-	8,40	10,0		●	●	●	●
8,50	-	9,40	11,0		●	●	●	●
9,50	-	10,40	12,0		●	●	●	●
10,50	-	11,40	13,0	1,5	●	●	●	●
11,50	-	12,40	14,0		●	●	●	●
12,50	-	13,40	15,0		●	●	●	●
13,50	-	14,40	16,0		●	●	●	●
14,50	-	15,40	17,0	1,5	●	●	●	●
15,50	-	16,40	18,0		●	●	●	●
16,50	-	17,40	19,0		●	●	●	●
17,50	-	18,40	20,0		●	●	●	●
18,50	-	19,40	21,0		●	●	●	●
19,50	-	20,00	22,0		●	●	●	●