

5317. Führungsbuchsen ohne Bund
DIN ISO 2768 mittel, Bronze mit Festschmierstoff

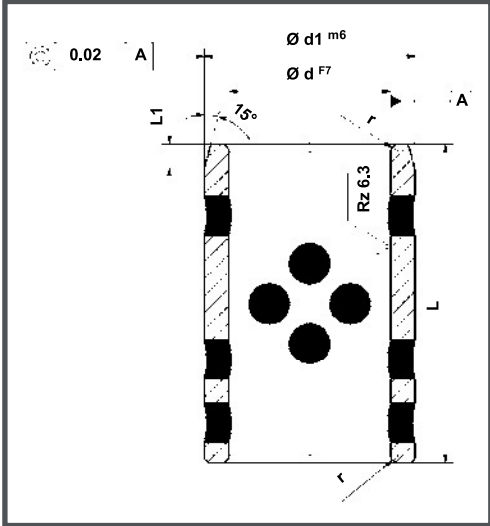
i **Produkteigenschaften**

Material: Bronze mit Festschmierstoff, wartungsarm

Härte: HB10: 190 - 220

Hinweis: Empfohlene Aufnahmebohrung beim Einpressen H7, beim Einkleben G7 (evtl. mit Gewindestift sichern)

Zeichnung zu 5317.



Bestellbeispiel:

5317.020.028.040
Führungsbuchsen ohne Bund
d = 20,0 mm
d1 = 28,0 mm
L = 40,0 mm

Tabelle zu 5317.

ød	8	8	10	10	12	12	13	14	15	16	16	18	19	20	20	20	22	25	25	25	30	30	30	31	32	35	35	38
ød1	11	12	14	15	16	18	19	20	21	20	22	24	26	26	28	30	32	30	33	35	38	40	45	40	42	44	45	48
L1	1	1	1	1	2	2	2	2	2	2	2	2	2	3	2	2	3	3	3	3	3	3	3	3	3	3	3	3
r	1	1	1	1	1	1	1	1	1	1	1	1	1	1	1	1	2	2	2	2	2	2	2	2	2	2	2	2

L	-0,1	-0,3																											
8		●	●																										
10		●	●	●	●	●	●	●	●	●					●														
12		●	●		●	●		●	●	●	●	●			●	●	●	●	●	●	●	●							
14	●																												
15	●	●	●			●			●	●	●	●	●	●	●	●	●					●							
16					●	●	●		●	●	●	●	●			●	●			●	●								
18													●																
20					●	●	●	●	●	●	●	●	●	●	●	●	●	●	●	●	●	●	●				●		
25					●		●	●	●	●	●	●	●	●	●	●	●	●	●	●	●	●	●				●	●	
28										●																			
30					●		●	●		●				●	●	●			●	●	●	●		●	●	●	●	●	●
35										●						●	●			●	●	●	●				●	●	
40										●						●	●			●	●	●	●	●	●	●	●	●	●
45																						●							●
50															●	●			●	●	●	●					●	●	
60																			●	●	●	●					●	●	
100																													●

Maße ohne Toleranzangabe | DIN ISO 2768 mittel

5317. Führungsbuchsen ohne Bund

DIN ISO 2768 mittel, Bronze mit Festschmierstoff

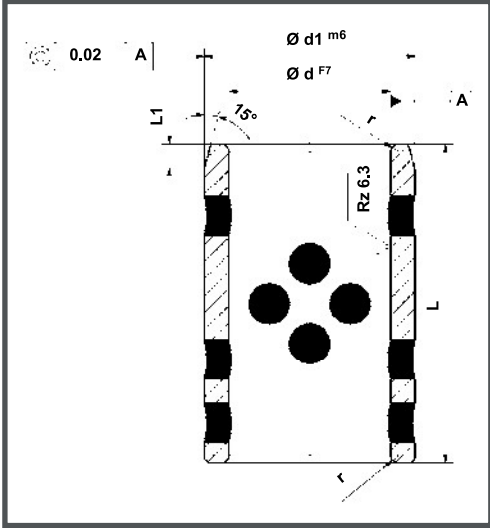
i Produkteigenschaften

Material: Bronze mit Festschmierstoff, wartungsarm

Härte: HB10: 190 - 220

Hinweis: Empfohlene Aufnahmebohrung beim Einpressen H7, beim Einkleben G7 (evtl. mit Gewindestift sichern)

Zeichnung zu 5317.



Bestellbeispiel:
 5317.020.028.040
 Führungsbuchsen ohne Bund
 d = 20,0 mm
 d1 = 28,0 mm
 L = 40,0 mm

Tabelle zu 5317.

Ød	40	40	45	45	45	50	50	50	55	60	60	60	63	65	70	70	75	75	80	80	90	100	110	120	125	130	140	150	160
Ød1	50	55	55	56	60	60	62	65	70	70	74	75	75	80	85	90	90	95	96	100	110	120	130	140	145	150	160	170	180
L1	3	3	3	3	3	3	3	3	3	4	4	4	4	4	4	4	4	4	4	4	4	4	4	4	4	4	4	4	4
r	2	2	2	2	2	2	2	2	2	3	3	3	3	3	3	3	3	3	3	3	3	3	3	3	3	3	3	3	3

L	-0,1	-0,3																												
20	●																													
25	●	●																												
30	●	●	●	●	●	●	●	●			●	●																		
35	●	●	●	●		●	●				●	●			●															
40	●	●	●	●	●	●	●	●	●		●	●			●	●				●	●									
45											●																			
50	●	●	●	●	●	●	●	●	●	●	●	●		●	●	●				●	●	●								
60	●	●	●	●	●	●	●	●	●		●	●	●	●	●	●	●	●	●	●	●	●	●	●	●	●	●	●	●	●
70					●	●	●	●	●		●	●	●	●	●	●	●	●	●	●	●	●	●	●	●	●	●	●	●	●
80	●				●	●	●	●			●	●	●	●	●	●	●	●	●	●	●	●	●	●	●	●	●	●	●	●
100								●				●			●	●	●	●	●	●	●	●	●	●	●	●	●	●	●	●
110			●																											
120																					●	●	●	●	●	●	●	●	●	●
130																												●		
140																				●			●		●			●		
150																													●	●

Maße ohne Toleranzangabe | DIN ISO 2768 mittel

Gleitelemente