

912. Posaunenhalstempel DIN 9861
mit Abdrückstift

i Produkteigenschaften

Material: HSS (1.3343)
Härte: Schaft: 64 ± 2 HRC
 Kopf: 50 ± 5 HRC
 Andere Materialien und Abmessungen auf Anfrage.

Zeichnung zu 912.

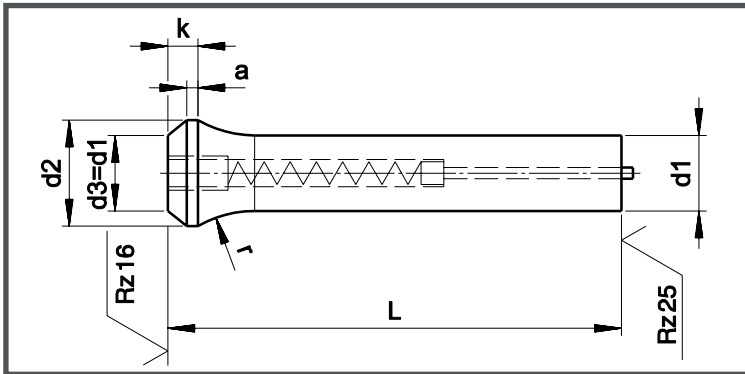


Tabelle zu 912.

D1 h6	D3 -0,2	r -0,2	a	k +0,2	L +0,5		
					80	100	130
Standardlängen							
5,0	7,0	10,0	1,5	4,0		●	●
6,0	9,0					●	●
7,0	10,0	12,0				●	●
8,0	11,0					●	●
9,0	13,0	15,0				●	●
10,0	14,0					●	●
11,0	15,0					●	●
12,0	16,0					●	●
13,0	17,0					●	●
14,0	18,0					●	●
15,0	19,0			●	●		
16,0	20,0			●	●		
17,0	21,0		●	●			
18,0	22,0		●	●			
19,0	23,0		●	●			
20,0	25,0		●	●			

Bestellbeispiel:

912.1000.080
 Schneidstempel mit Posaunenhalss, HSS
 D1 = 10,0 mm
 L = 80,0 mm